

Application

For residential and commercial folding windows where weatherproofing of the opening is required.

Weatherfold Servery 35 hardware is suitable for timber and aluminium door systems.

Specifically designed using the technology developed for Weather Coastal Australia's premier exterior door hardware system.

Weatherfold Servery hangers are cast 316 marine grade stainless steel with precision stainless steel bearings and nylon outer tyres.

Door Specification

Track System:	Weatherfold 4s Servery 35
Max Panel Height	1800mm
Max Panel Weight	35kg
Max Panel Width	650mm
Min Panel Thickness	35mm
Max Number of Panels	2 each direction

Hardware Specification

Track:	120
Material	Aluminium
Finish	Clear Anodised
Standard Lengths	2000mm, 3000mm, 4000mm and 6000mm

Hanger Sets:	
End Hanger - Aluminium	Includes Hanger BWS2F-35SH
End Hanger - Timber	Includes Hanger BWS2F-35SM
Intermediate Hanger Set	Includes Hanger and 2 Hinges BWS4F-35SH

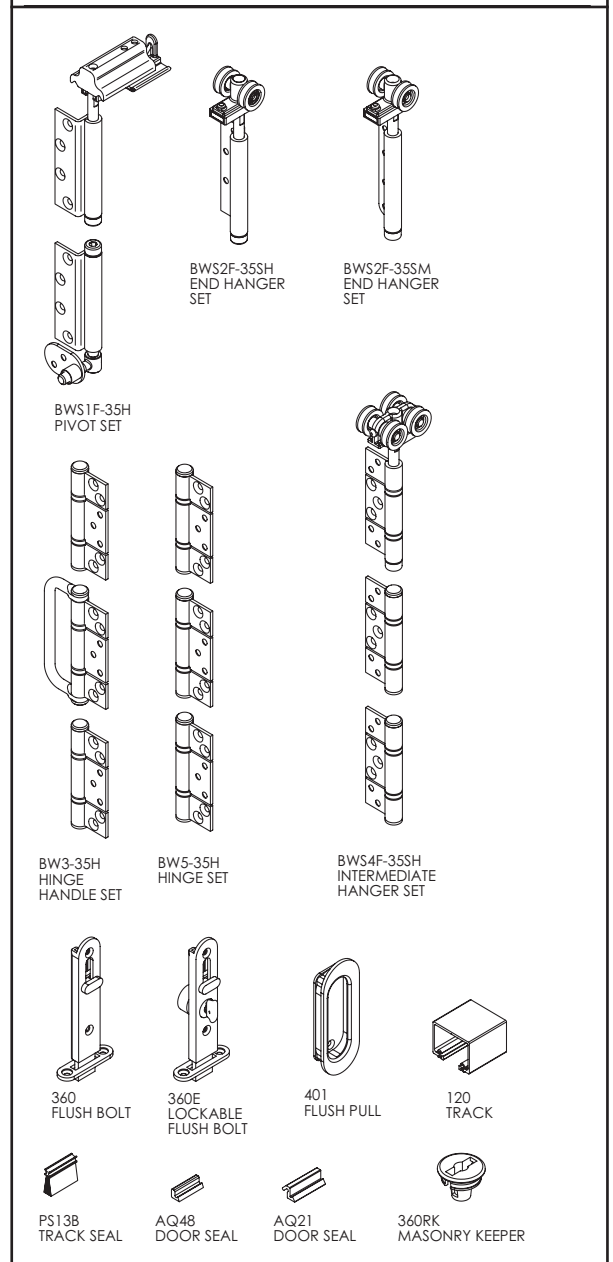
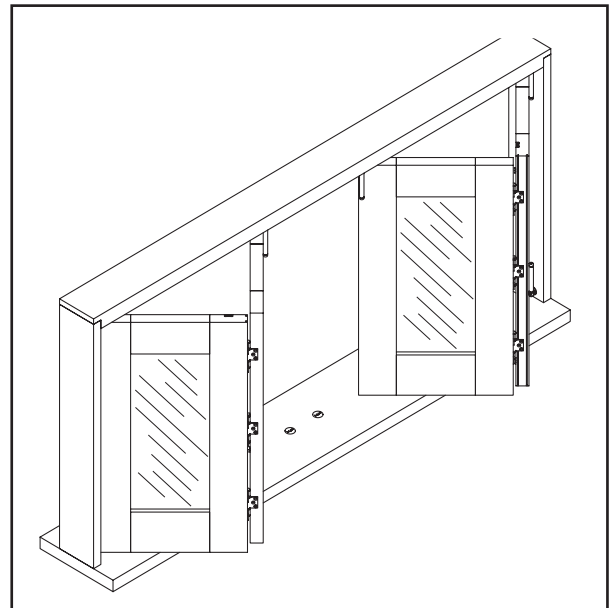
Pivot Sets:	
Top and Jamb Pivots	BWS1F-35H

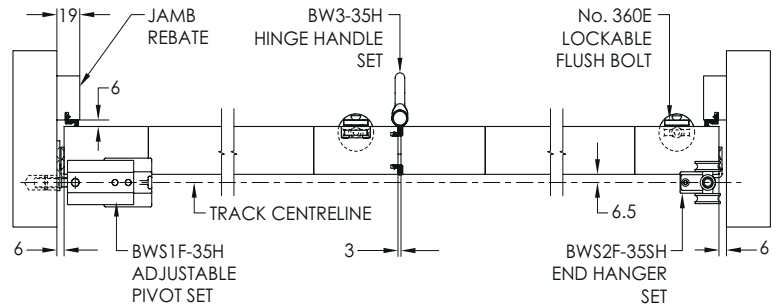
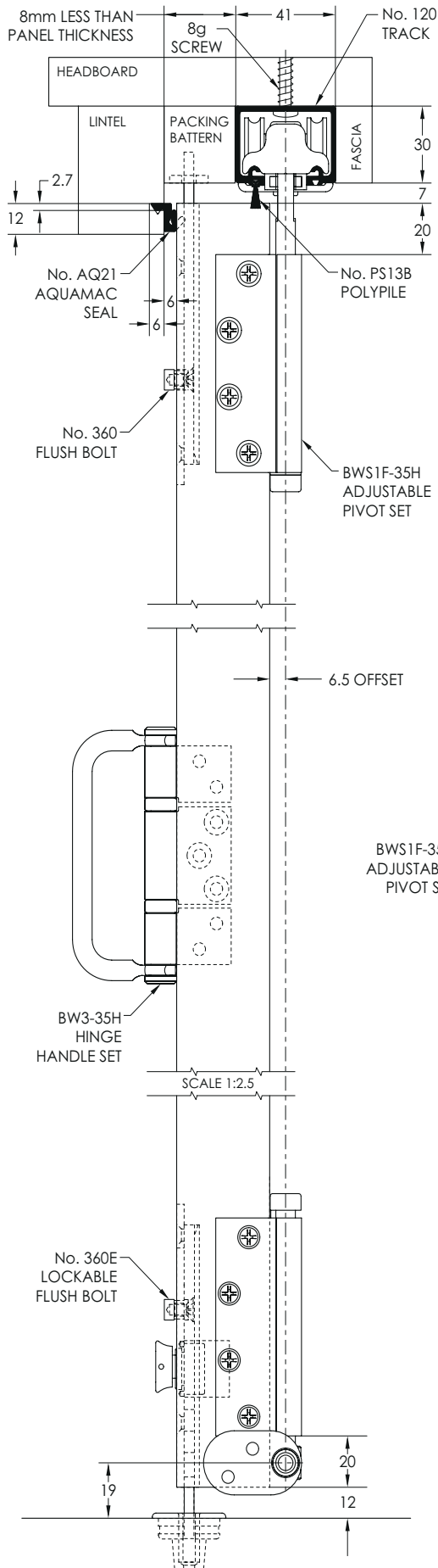
Hinge Sets:	
Hinge Handle Set	BW3-35H
Hinge Set	BW5-35H

Accessories:	
Flush Pull	401
Flush Bolt Window Standard	360
Flush Bolt Window Lockable	360E
Flush Bolt Window Necked	360N
Flush Bolt Window Long	360L
Masonry Keeper	360RK
Flush Bolt - Std Aluminium	512
Flush Bolt - Lockable Aluminium	512E
Frame Seal	AQ21
Window Seal	AQ48
Track Seal	PS13B

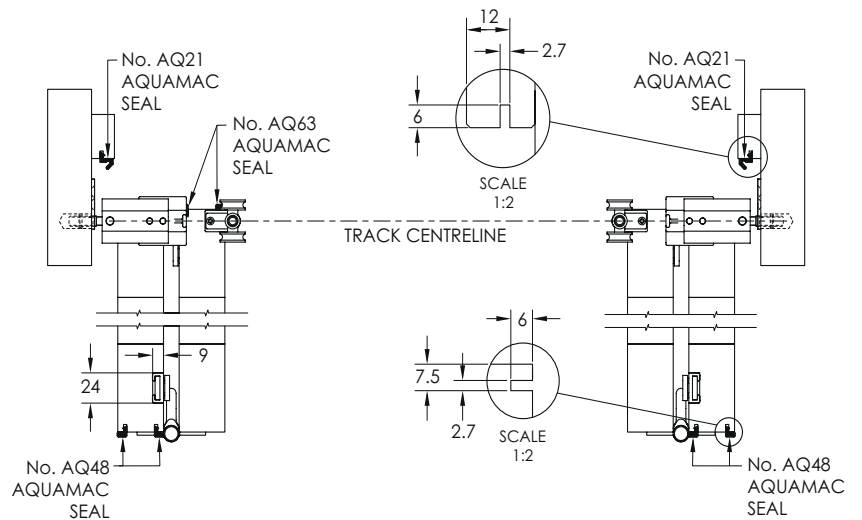
Finish options

Hardware: (SS) Satin Stainless, (PS) Polished Stainless
Flushbolts: 360 (SN) Satin Nickel, (PN) Polished Nickel
512 (SS) Satin Stainless Steel

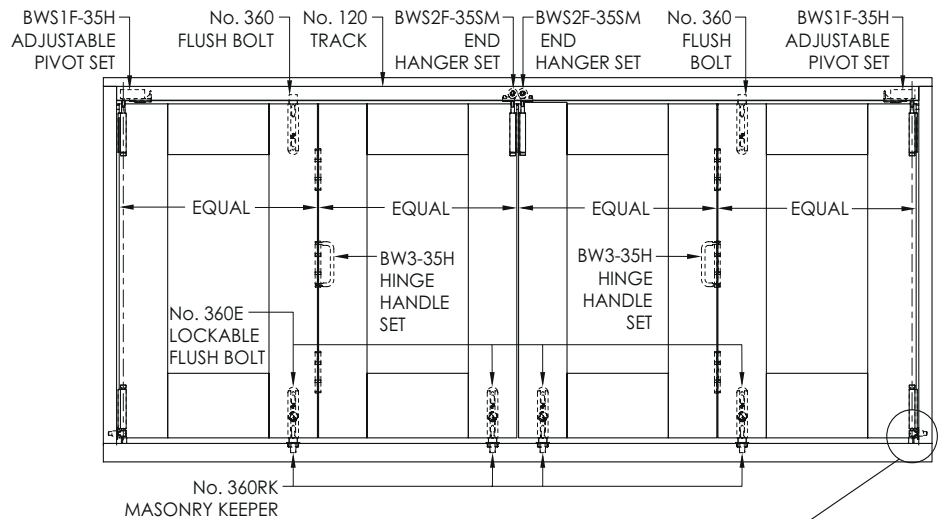




2+0 PANEL OUTWARD OPENING SYSTEM - CLOSED
(SHOWN WITHOUT TRACK OR HEAD) SECTION SCALE 1:6



2+2 PANEL OUTWARD OPENING SYSTEM - OPEN
(SHOWN WITHOUT TRACK OR HEAD) SECTION SCALE 1:6



2+2 PANEL OUTWARD OPENING SYSTEM - CLOSED
TYPICAL OUTSIDE ELEVATION

THE 6mm GAP MAY BE REDUCED TO 3mm BY CHECKING IN THE JAMB MOUNTING PLATE

